



MONTHLY MEMBERSHIP PROGRESS REPORT

District 322 F

Results as of: 06/30/2018

GMT: SWADESH RANJAN SAHA

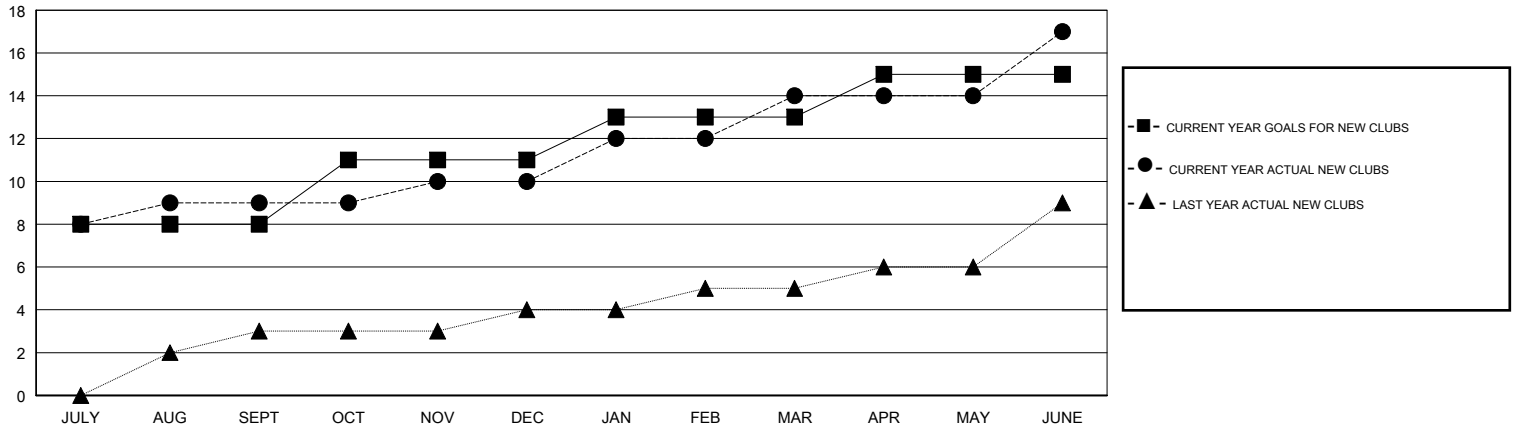
LOCATION INDIA

GMT CA

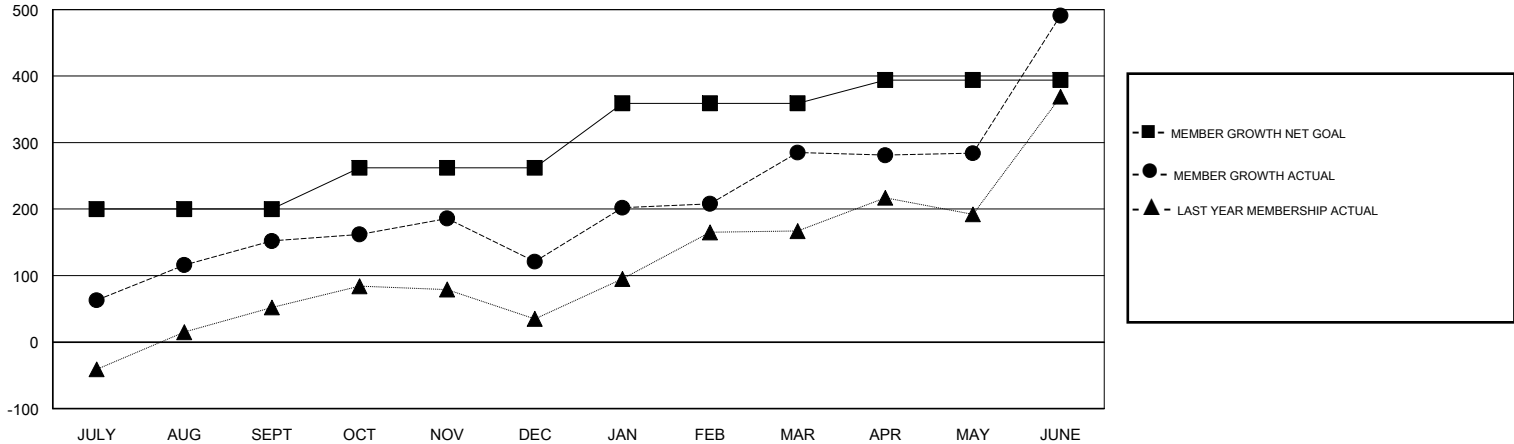
Clubs			
RESULTS FOR 2017-2018			
QUARTER	NEW CLUB GOAL	NEW CLUBS	DROPPED CLUBS
JULY/AUG/SEPT	8	9	0
OCT/NOV/DEC	3	1	4
JAN/FEB/MAR	2	4	1
APR/MAY/JUNE	2	3	0

Members			
RESULTS FOR 2017-2018			
QUARTER	MEMBER GROWTH NET GOAL	MEMBER GROWTH ACTUAL	DROPPED MEMBERS ACTUAL (including transfers)
JULY/AUG/SEPT	200	289	130
OCT/NOV/DEC	62	67	96
JAN/FEB/MAR	97	264	70
APR/MAY/JUNE	35	479	267

GOALS AND ACTUAL NEW CLUBS CUMULATIVE



GOALS AND ACTUAL MEMBERS CUMULATIVE



DROPPED CLUBS: 5	77 CLUBS OF 96 ADDED 1 OR MORE NEW MEMBERS	<u>GENDER DISTRIBUTION</u>	
DROPPED MEMBERS		MALE	2,464 (76.05%)
DECEASED	7	FEMALE	776 (23.95%)
CLUB CANCELLED	92	Women Percentage Fiscal Year Goal: 32%	
OTHER	464	TOTAL FAMILY UNIT MEMBERS	0
TOTAL	563	FAMILY MEMBERS PAYING HALF DUES	0

[CLICK HERE FOR CUMULATIVE MEMBERSHIP DATA](#)